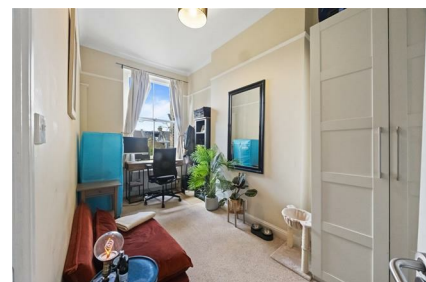
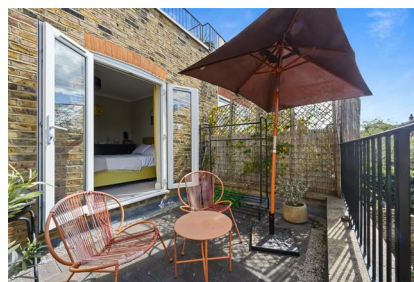


Parkheath

Sold on Service

Callcott Road NW6

£2,400 PCM (£554 per week) - Brent (Flat B) Band C



Bright and airy two-bedroom apartment
Attractive reception with feature fireplace
Open-plan kitchen with breakfast bar
Second bedroom/office
Approx. 0.4 miles to Brondesbury Overground

First floor converted flat
High ceilings and wood flooring
Main bedroom with balcony/terrace access
Moments from local amenities
EPC: Rating D, Council Tax: Brent, band C

West Hampstead Office 020 7794 7111

Callcott Road, NW6
Approx. Gross Internal Area
628 Sq Ft - 58.34 Sq M



First Floor

Measured in accordance with RICS guidelines. Every attempt is made to ensure accuracy, however all measurements are approximate. This floor plan is for illustrative purposes only and is not to scale.
© Datagraphy Ltd 2014
Photographs * Floorplans * Virtual Tours
Tel: 0845 643 4401 www.datagraphy.com

The particulars do not constitute part of an offer or contract. The particulars, including text, photographs and plans, are for the guidance only of prospective purchasers/tenants and must not be relied upon as statements of fact. The descriptions provided therein represent the opinion of the author and whilst given in good faith should not be construed as statements of fact. Nothing in these particulars shall be deemed a statement that the property is in good condition or otherwise or that any services or facilities are in good working order. All measurements are approximate